



ELEPHANT STRUCTURES

QUALITY, CUSTOMER SERVICE & BEST PRICES!

Free Pricing Estimator Online at: WWW.CARPORT.COM

SINGLE WIDE STRUCTURE

CALL NOW: (855) 227-7678

Monday - Thursday, 8:30 to 9:00 Eastern, Friday 8:30 to 7:00, and Saturday 10:00 to 3:00.

#28382



SINGLE WIDE METAL STRUCTURE

CALL NOW TO ORDER!

This single wide metal structure from **Elephant Structures** is perfect for anyone looking for a metal building at a great price. The carport is designed with open sides and ends for easy vehicle and storage access. Building specifications include dimensions of 12' wide x 24' long x 7' tall, a 14 gauge galvanized steel frame, and a regular roof with 29 gauge panels. The structure has 288 square feet of storage space. This versatile structure is great for vehicle and equipment storage, but can also be used as a workshop area, auto-repair shelter, and more!

If you are looking for a metal structure at a great price, contact the experts at **Elephant Structures**. We custom manufacture clear span buildings up to 60' wide, at any length you need. Heavy duty commercial framing available. Give us a call today!

GET INSTANT PRICING ONLINE. PRICE MAY VARY BY ZIP CODE

WIDTH	LENGTH	HEIGHT	GARAGE DOOR	WALK-IN DOOR	WINDOWS
12	24	7	0	0	0

ROOF STYLE REGULAR
 ROOF COLOR BLUE
 METAL TRIM BLUE
 CERTIFICATION AVAILABLE UPGRADE
 FRAME GAUGE 14 GAUGE
 WALL STYLE OPEN
 WALL ORIENTATION N/A
 WALL COLOR N/A
 END STYLE OPEN
 END ORIENTATION N/A
 END COLOR N/A
 GARAGE DOORS OPTIONAL
 ACCESS DOORS OPTIONAL
 WINDOWS OPTIONAL

12' WIDE x 24' LONG x 7' TALL

AVAILABLE PAINT COLOR CHOICES NOTE: ACTUAL COLORS MAY VARY



Barn Red



Burgundy



Brown



Forest Green



Beige



Sandstone



Tan



Galvalume



Clay



White



Dark Gray



Light Gray

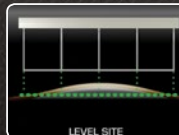


Slate Blue

LAND/CEMENT FOUNDATION MUST BE LEVEL



- Cement should be 1 ft. shorter than roof length.
- Cement must be level and square from corner to corner.
- Return trip fees will apply if building is not installed.

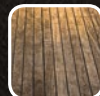


In order to get the highest quality installation, we ask to have the site prepared and ready to go on the day of installation. There should be no electrical wires less than 15 feet above the peak height and confirm no underground utilities will be impacted by the installation process (must be 4' or more beneath the impacted areas for ground installation). Remember, all of our structures come with free installation and free delivery.

INSTALLATION SURFACES



GRASS



WOODEN
DECKING/DOCKS



GRAVEL



CONCRETE



DIRT

SCAN TO VIEW ONLINE



PRICES VARY ON LOCATION • FREE DELIVERY & FREE INSTALLATION!



SHOP ONLINE WITH INSTANT LOCAL PRICING AT WWW.CARPORT.COM